

## 2 Staging Areas

In order to accommodate 2 classes of students at the same time and still keep a small group learning environment, we will need to create two staging areas: Staging Area A and B.

6 Treks composite built in benches 8' x 1'  
1 redwood portable puppet theater (removable each lesson)

There's 5' distance from table to benches and 3' aisles; 2' between benches  
Concrete posts support benches  
Total dimension is about 15' x 30'

How to build the Woodcreek Nature Center benches

Supplies to make 12 benches (8'x1')

36--2"x6" x 8' boards. TRAXES (artificial wood)

24-- 3" pipe flanges

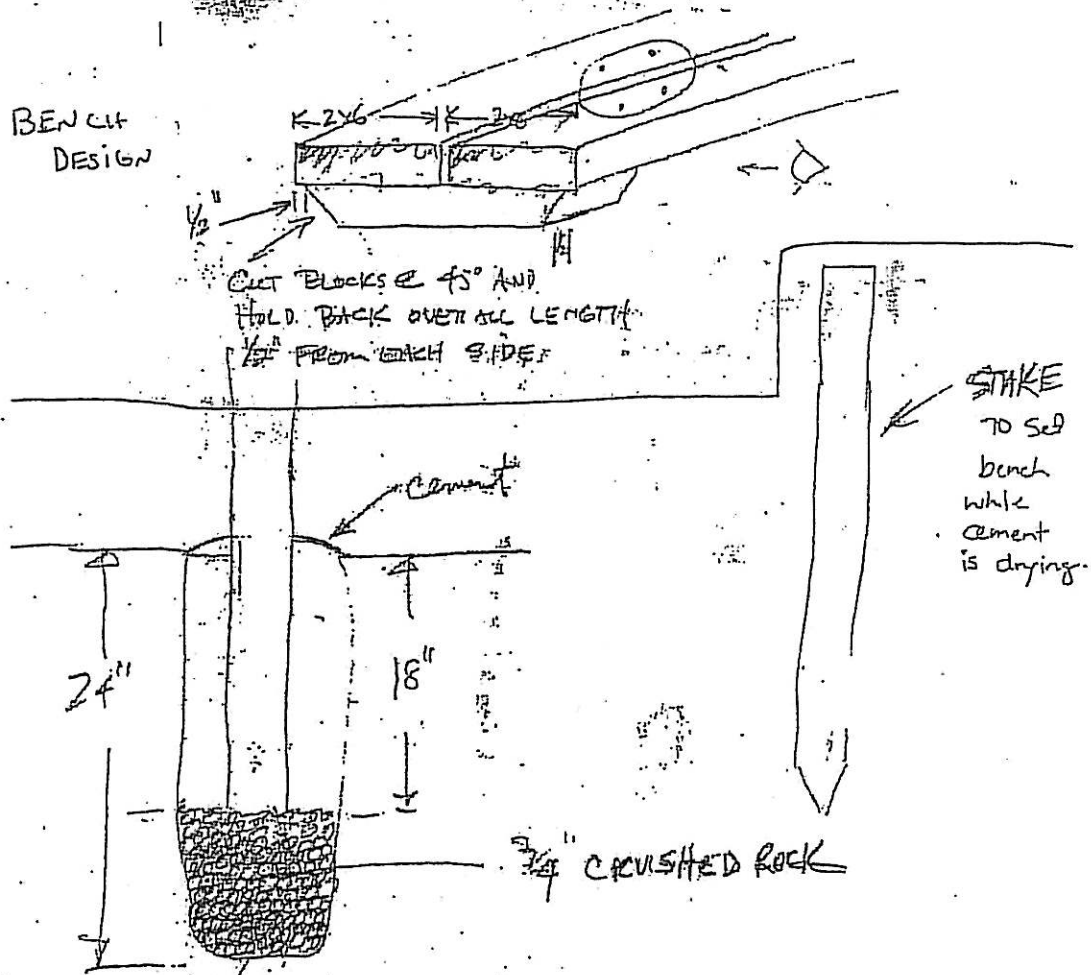
24--36" galvanized pipes with thread on one end (this will screw into pipe flanges that are screwed into the benches)

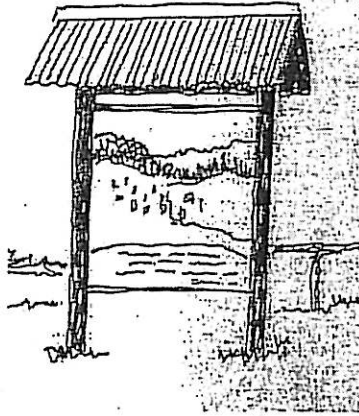
How to build:

Place wood braces to hold both 2"x6" x 8' boards together every 2' (We will need 4 braces per bench). Cut braces at 45° and hold back over all length 1/2" from each side.

Pipe flanges should be screwed into the middle of both 2" x 6" x 8' boards at a distance of 18" from each end.

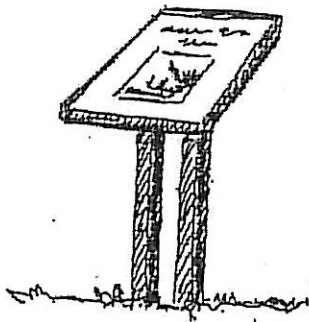
Screw in 36" galvanized pipe into each pipe flange.





## Kiosks

The kiosk will be similar to these shown here. The posts will be redwood and it will have a redwood, shingled roof. The informational signs will be protected by plexi-glass that is removable so that we can change the display. The dimensions will be 3.5' x 1' x 7'



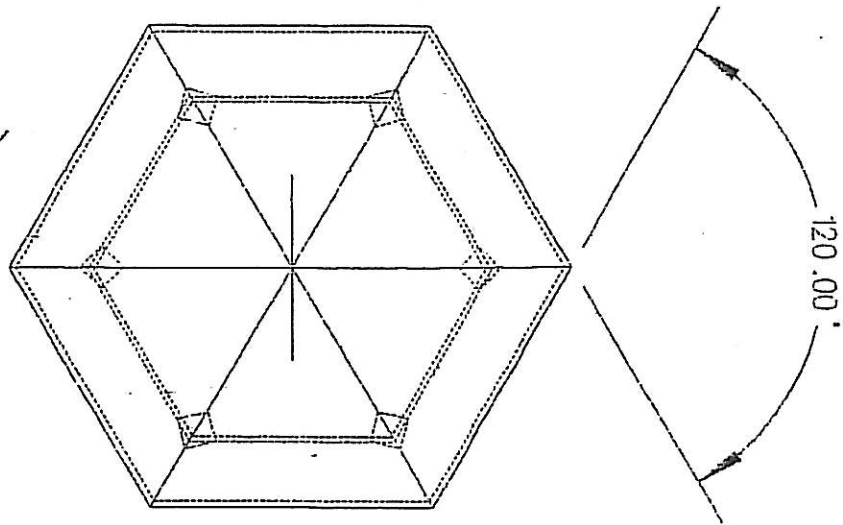
## Signs or Markers

Signs along trail and in arboretum area will look like this. This is 2 metal pipes welded to the angled metal square plate. A square piece of plywood is screwed into the metal backing. The colored laminated information sheet is placed on top of the board. A sheet of plexiglass screws into the board and protects the laminated information sheet. Epoxy caulking will seal the plexiglass to the board to make it water tight. This is a more vandal proof design than a wooden marker. The dimensions are 2' x 11" and 3' x 11".

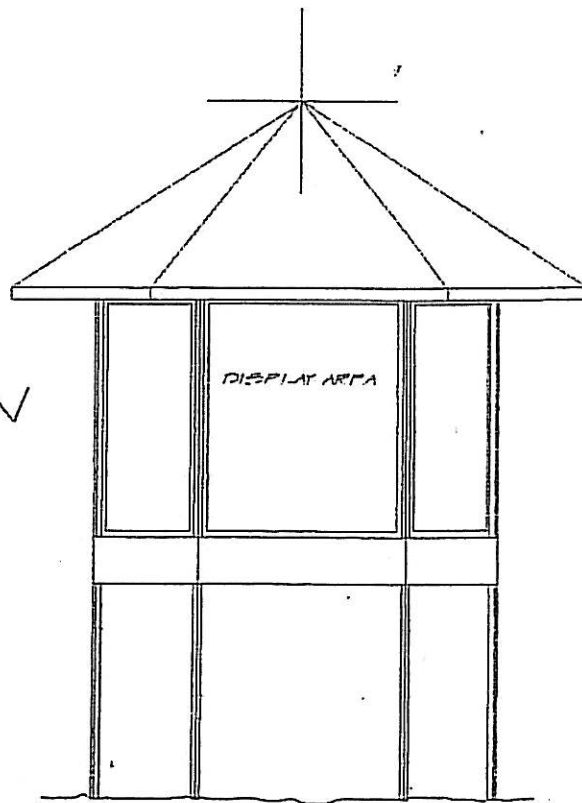
K. Aral

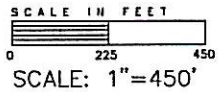
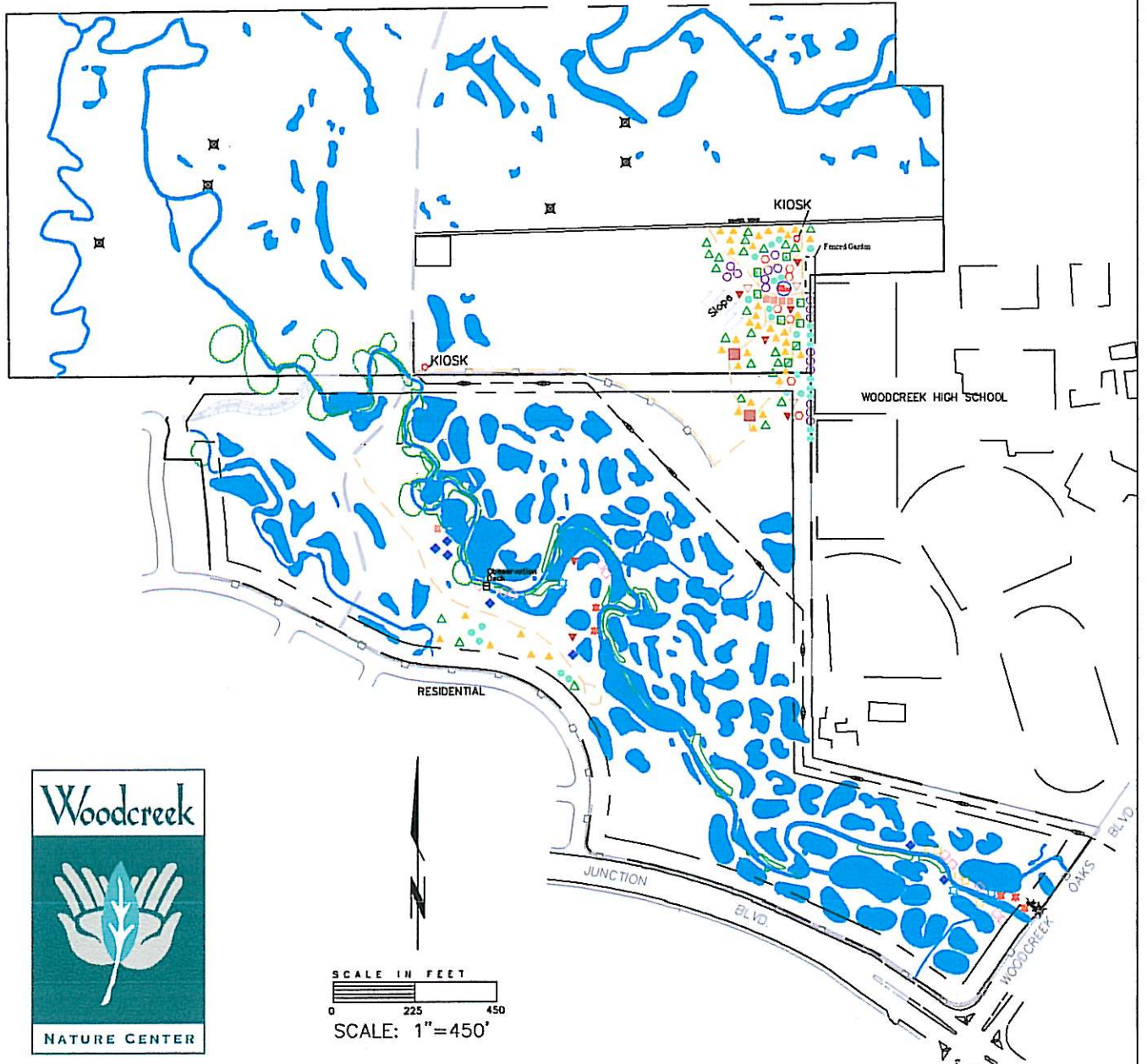
ROUGH SKETCH NO SCALE OR DIMENSION

PLAN VIEW



ELEVATION





**PLANTING LEGEND**

▲ Blue Oak	■ Tanyon
▲ Valley Oak	■ Black Willow/Arroyo Willow
● Live Oak	◆ Sycamore
○ Grey Pine	◇ Cottonwood
○ California Bay	✱ White Alder
▼ California Walnut	★ Oregon Ash
▽ California Buckeye	

**LEGEND**

Existing Wetland		Staging Area	■
Proposed Nature Trail (Mowed)		Future Planting Area	□
Existing Bike Trail		Sewer Line	
Electric Tower	⊗	Post and Cable Fence	

FILENAME: -DWGS\WOODCREEK HIGH SCHOOL\WCHS3.DWG.DWG 08/01/03

**WOODCREEK HIGH SCHOOL NATURE CENTER**

WOODCREEK HIGH SCHOOL

